



Electrical, Voice- and Datacom Identification

BBP12 Label Printer



BBP12 Label printer

The BBP12 Label Printer is an entry level benchtop label printer for cable, component, product and laboratory sample identification that offers great value for money. The **compact** BBP12 offers a high print speed of **101.6 mm/second** and can handle a **wide range** of highly durable and specialised Brady **identification labels**.

Simple, efficient design

- Compact in size, fits on every desk
- Default Ethernet Connectivity, allowing you to work in a network
- Connect any universal keyboard via USB 2.0 to work in stand-alone mode
- Full colour LCD Display and intuitive software interface are simple to use, so no extensive training is required
- Simple calibration menu with easy 1-2-3 step printing
- Best price/quality in the market for low volume printing
- Comes with a free unwinder accessory to print larger label rolls

Performance

- Prints a wide range of identification labels from 10 mm up to 112 mm wide
- Standard 300 dpi print quality allowing accurate image & barcode positioning on small labels
- With its powerful 32 bit processor and its extended memory it can print up to 101.6 mm / sec
- The printer supports the industry-standard Zebra® and Eltron® programming languages
- Print time and date on to your labels via the “Real time clock feature”



25.40 mm small core materials designed specifically for the BBP12 Label Printer.
Unwinder included for larger quantity bulk 76 mm core rolls.

[Scan or click the QR code](#)



While the BBP12 label printer primarily uses 25.40 mm core materials for low to medium volume printing, an unwinder is available should high volume printing be needed.

Versatile labelling options



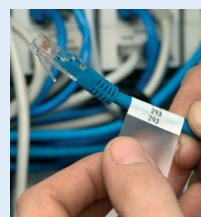
Circuit board labels



Asset tracking labels



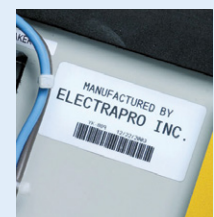
Voice & data communications



Wire marker labels & sleeves



General purpose labels



...And more!

Printer specifications

The Brady BBP12 label printer is a compact, reliable, affordable entry level thermal transfer benchtop printer. Ideal for customers requiring low volume printing on lots of different materials within the electrical, voice and datacom, LAB and specialized electronics markets. It allows you to print labels, tapes, cable markers, sleeves and much more. This printer comes with a free Brady WorkStation Basic Design Software Suite, enabling you to immediately start designing professional labels.

Application	Asset tracking Barcode labelling Laboratory labelling Wire and cable labelling
Recommended Throughput Operational Hours	8 hours/5 days
Recommended Usage per Day	500
Software Compatibility	Brady Workstation Windows based driver for 3rd party software use
Colour Capability	Monocolour
Connectivity	Ethernet, Serial, USB
Cutter	None
Hardware Options	Peel & Present, Universal Keyboard, Cutter (factory installed option)
Flash Memory	128 MB (Flash), 64 MB (SDRAM), SD Flash memory card up to 32 GB
Memory - RAM/Flash	128 MB
Max Print Width	105.60 mm
Stand-alone Printing (Detached from PC)	Stand-alone & Peripheral
Print Speed (mm/sec)	101.60 mm/s
Print Technology	Thermal Transfer
Stand-alone Printing (Detached from PC)	Stand-alone & Peripheral
Materials Supported	Nylon Cloth, Paper, Polyester, Polyethylene, Polyimide, Polyolefin (Sleeves), Polypropylene, Thermoplastic polyether-polyurethane, Vinyl, Vinyl Cloth, Outdoor Vinyl, Self-laminating Vinyl
Bar Code Capability	Code 39; Code 39 with check digit; Code 93; Code 128UCC; Code 128 subset A, B, C; Codabar; Interleave 2 of 5; Interleaved 2 of 5 with check digit; EAN-8; EAN-13; EAN-128; UPC-A; UPC-E; MSI; MSI with check digit; PLESSEY; POSTNET; Logmars; Code 11; Code 49; China post; ITF14; TELEPEN; TELEPENN; PLANET; Deutsche Post Identcode; Deutsche Post Leitcode; GS1 DataBar; GS1 DataMatrix; Maxicode; AZTEC; PDF417; QR Code; Micro PDF 417
Approval/Compliance	UL; cUL; CE; RoHS; EAC
Dimensions	202.00 mm W x 173.00 mm H x 258.00 mm D
Weight (kg)	2.5

BBP12 printer part numbers

Article No.	Order Reference	Description
195966	BBP12-EU+U+CUTTER	BBP12 Label printer 300 dpi - EU with Cutter and Unwinder
195566	BBP12-EU+UNWINDER	BBP12 Label printer 300 dpi - EU with Unwinder
306867	BBP12-EU-U-C-LABS	BBP12 Label printer 300 dpi - EU with Cutter, Unwinder and Brady Workstation LAB Suite
198594	BBP12-EU-U-C-PWID	BBP12 Label printer 300 dpi - EU with Cutter, Unwinder and Brady Workstation PWID Suite
306866	BBP12-EU-U-LABS	BBP12 Label printer 300 dpi - EU with Unwinder and Brady Workstation LAB Suite
198595	BBP12-EU-U-PWID	BBP12 Label printer 300 dpi - EU with Unwinder and Brady Workstation PWID Suite
302670	BBP12-SPS-EU	BBP12 Label printer 300 dpi - EU with Unwinder, Barcode Reader and Brady Workstation Scan & Print Suite
302671	BBP12-SPS-UK	BBP12 Label printer 300 dpi - UK with Unwinder, Barcode Reader and Brady Workstation Scan & Print Suite
195967	BBP12-UK+U+CUTTER	BBP12 Label printer 300 dpi - UK with Cutter and Unwinder
195567	BBP12-UK+UNWINDER	BBP12 Label printer 300 dpi - UK with Unwinder
306869	BBP12-UK-U-C-LABS	BBP12 Label printer 300 dpi - UK with Cutter, Unwinder and Brady Workstation LAB Suite
198599	BBP12-UK-U-C-PWID	BBP12 Label printer 300 dpi - UK with Cutter, Unwinder and Brady Workstation PWID Suite
306868	BBP12-UK-U-LABS	BBP12 Label printer 300 dpi - UK with Unwinder and Brady Workstation LAB Suite
198600	BBP12-UK-U-PWID	BBP12 Label printer 300 dpi - UK with Unwinder and Brady Workstation PWID Suite
195968	BBP12-US+U+CUTTER	BBP12 Label printer 300 dpi - US with Cutter and Unwinder
195568	BBP12-US+UNWINDER	BBP12 Label printer 300 dpi - US with Unwinder
306871	BBP12-US-U-C-LABS	BBP12 Label printer 300 dpi - US with Cutter, Unwinder and Brady Workstation LAB Suite
198601	BBP12-US-U-C-PWID	BBP12 Label printer 300 dpi - US with Cutter, Unwinder and Brady Workstation PWID Suite
306870	BBP12-US-U-LABS	BBP12 Label printer 300 dpi - US with Unwinder and Brady Workstation LAB Suite
198602	BBP12-US-U-PWID	BBP12 Label printer 300 dpi - US with Unwinder and Brady Workstation PWID Suite



The Basic Suite is included with every printer, all you need to do is download it. Workstation.BradyID.com/Free



Quickly identify your products and wires with customised text or graphical labels, using serialised or imported data. Workstation.BradyID.com/ProductandWire



Easily identify any sample with the most wanted laboratory sample label design apps in our Brady Workstation Lab suite. Workstation.BradyID.com/lab

Accessory

Article No.	Order Reference	Description
622201	BBP11/12 BLNK CORE	BBP12 and BBP11 blank ribbon core
361061	BBP12/BBP11-C	Cutter
361064	BBP12/BBP11-P&P	Peel and Present
361065	BBP12/BBP11-U	External Material Holder for BBP12 and BBP11

BBP12 Printer kits

Article No.	Order Reference	Description
198588	BBP12-DATA KIT-EU	BBP12 Label printer 300 dpi - Datacom Kit - EU
198589	BBP12-DATA KIT-UK	BBP12 Label printer 300 dpi - Datacom Kit - UK
198590	BBP12-DATA KIT-US	BBP12 Label printer 300 dpi - Datacom Kit - US
198591	BBP12-ELEC KIT-EU	BBP12 Label printer 300 dpi - Electrical Kit - EU
198592	BBP12-ELEC KIT-UK	BBP12 Label printer 300 dpi - Electrical Kit - UK
198593	BBP12-ELEC KIT-US	BBP12 Label printer 300 dpi - Electrical Kit - US
198596	BBP12-LAB KIT-EU	BBP12 Label printer 300 dpi - Laboratory Kit - EU
198597	BBP12-LAB KIT-UK	BBP12 Label printer 300 dpi - Laboratory Kit - UK
198598	BBP12-LAB KIT-US	BBP12 Label printer 300 dpi - Laboratory Kit - US

Africa

Randburg, South Africa
 Tel.: +27 11 704 3295
 Email: africa@bradycorp.com

Benelux

Zele, Belgium
 Tel.: +32 (0) 52 45 78 11
 Email: benelux@bradycorp.com

Central & Eastern Europe

Bratislava, Slovakia
 Tel.: +421 2 3300 4800
 Email: central_europe@bradycorp.com

Denmark

Odense
 Tel.: +45 66 14 44 00
 Email: denmark@bradycorp.com

France

Roncq
 Tel.: +33 (0) 3 20 76 94 48
 Email: france@bradycorp.com

Germany, Austria & Switzerland

Egelsbach, Germany
 Tel.: +49 (0) 6103 7598 660
 Email: germany@bradycorp.com

Hungary

Budaörs
 Tel.: +36 23 500 275
 Email: central_europe@bradycorp.com

Italy

Gorgonzola
 Tel.: +39 02 26 00 00 22
 Email: italy@bradycorp.com

Middle East FZE

Dubai, UAE
 Tel.: +971 4881 2524
 Email: me@bradycorp.com

Norway

Kjeller
 Tel.: +47 70 13 40 00
 Email: norway@bradycorp.com

Russia

Moscow
 Tel.: +7 495 269 47 87
 Email: central_europe@bradycorp.com

Spain & Portugal

Madrid, Spain
 Tel.: +34 900 902 993
 Email: spain@bradycorp.com,
 portugal@bradycorp.com

Sweden, Finland, Baltic states

Kista, Sweden
 Tel.: +46 (0) 8 590 057 30
 Email: sweden@bradyeurope.com

Turkey

Istanbul
 Tel.: +90 212 264 02 20 / 264 02 21
 Email: turkey@bradycorp.com

UK & Ireland

Banbury, UK
 Tel.: +44 (0) 1295 228 288
 Email: uk@bradycorp.com

Our mission is to identify and protect people, products and premises



To help minimise our impact on the environment, Brady limits its number of reprints.

Updated versions are always available for download on www.bradyeurope.com.

 Search for: EUR-M-177-EN



Y4953964

Your distributor

Adva-Tech

mail: info@adva-tech.eu
 mail: zamowienia@adva-tech.eu

08/04/2021